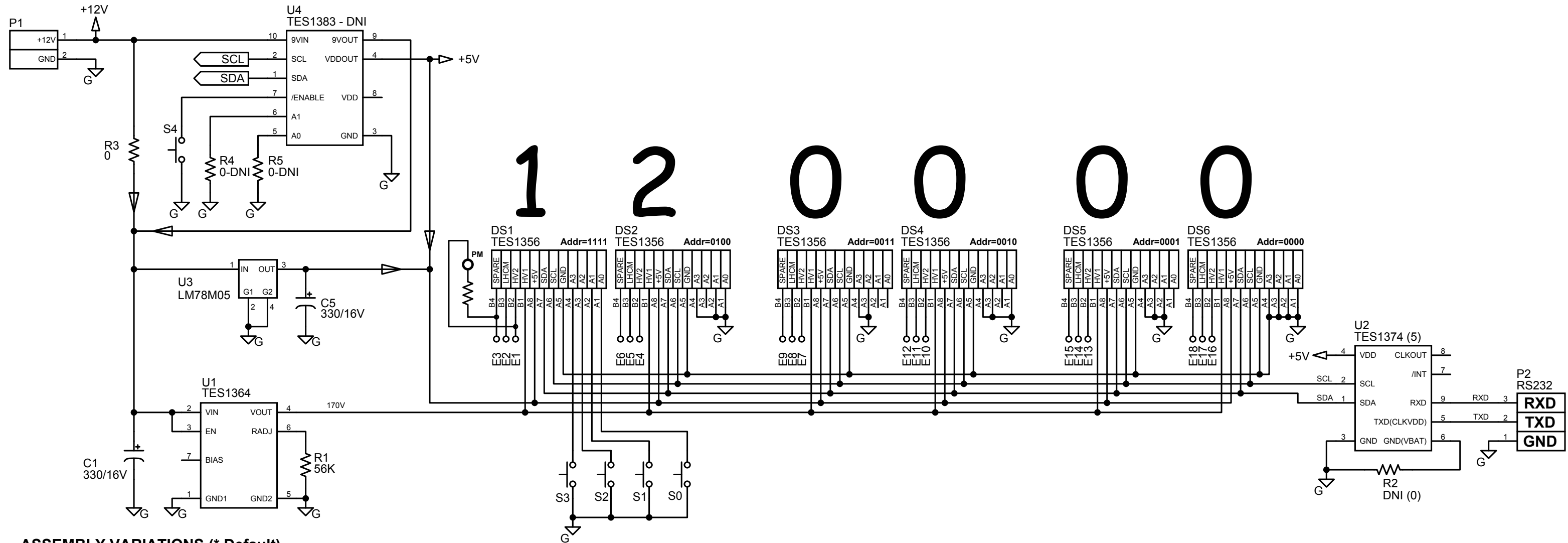


NOTES: UNLESS OTHERWISE SPECIFIED

1. Set all module address dip switches to OFF as the addresses are hard wired into the module sockets on the backplane.
2. Module DS1 becomes the clock master. Any saved settings such as DIMMING or 12/24 hour display mode are stored there. If the modules are moved, whichever module is plugged into DS1 will become the master and revert back to the factory default settings.
3. AM/PM indicator shown is not installed, may be connected if desired. AM/PM function only operates in 12 hour display mode.

REVISION HISTORY			
REV	DESCRIPTION	APPROVED	DATE



ASSEMBLY VARIATIONS (* Default)

POWER CONTROL

COMP	NO TIMER*	TIMER
U4	DNI	INSTALL
R4/R5	DNI	DNI
R3/U3/C5	INSTALL	DNI
S4	INSTALL	INSTALL

- Notes:
1. R4 and R5 set the mode of the timer, currently not used.
 2. The timer has an internal 5V regulator which is switched out to the display modules when the display is turned on. The C5 function is also internal to the timer module.
 3. S4 is only used for the timer function, installed in case timer added later.

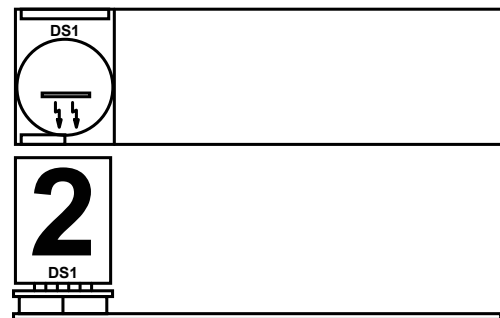
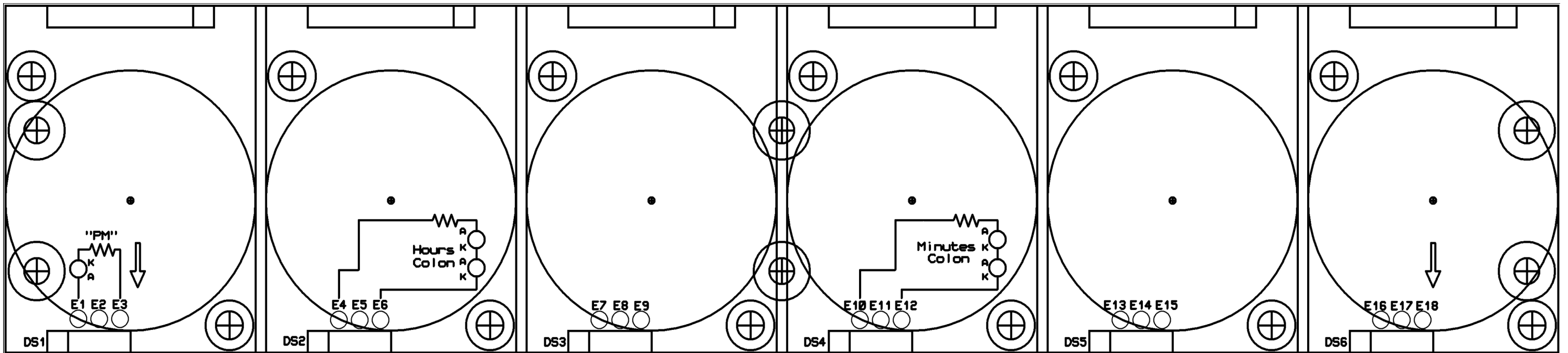
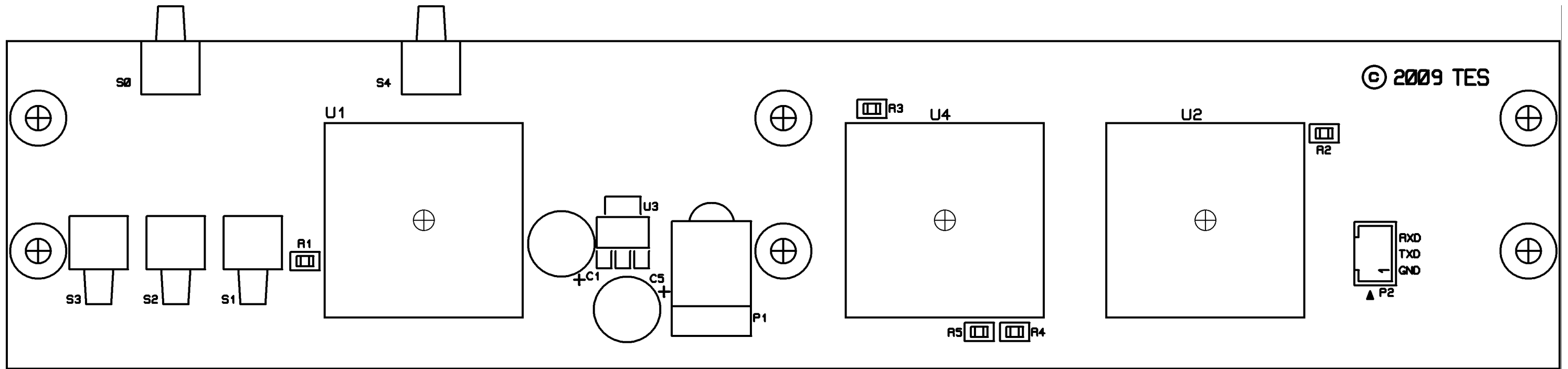
RTC

COMP	STD RTC*	GPS RTC
U2	TES1374	TES1375
R2	DNI	INSTALL
P2	INSTALL	INSTALL

- Notes:
1. P2 is only used for the GPS RTC function, installed in case GPS RTC added later.

APPROVALS		DATE	TITLE		
DRAWN	J TAYLOR	05/07/09	SmartNixie IN18 6 digit backplane RTC, HVPSU and Timer module options		
CHECKED			SIZE	FSCM NO.	DRAWING NO.
ENGINEER			B		1392.DSN
PROJ ENGINEER			SCALE	NONE	REV. -
APPROVED			© 2009 TES	MODIFIED: 10/02/09 11:14:06 AM	SHEET 1 OF 2

REVISION HISTORY			
REV	DESCRIPTION	APPROVED	DATE



APPROVALS		DATE	TITLE	
DRAWN	J TAYLOR	05/07/09	SmartNixie IN18 6 digit backplane RTC, HVPSU and Timer module options	
CHECKED				
ENGINEER				
PROJ ENGINEER			SIZE	FSCM NO.
APPROVED			B	DRAWING NO. 1392.DSN
QA			SCALE	NONE
			© 2009 TES	MODIFIED: 10/02/09 11:14:06 AM
			SHEET	2 OF 2
			REV.	-